

POWER ACOUSTIK

DRIVE ALERT



DVALT User Manual

Please read this manual carefully before using this device,
and please keep it properly for future use.


DRIVE ALERT

WARNING: This device is a driver assistant (or driver aid). The driver ultimately is responsible for ensuring the safe operation of the vehicle. This device does not communicate with the vehicle and is only a supplemental warning measure. Road conditions, installation, weather conditions, visibility, and other factors may affect the accuracy of this device. You should keep your eyes on the road at all times, be alert and look to your left and right before changing lanes. Look ahead to make sure you have enough distance between your car and car ahead and make sure you don't depart your lane inadvertently. Use of this product does not relieve the driver from making sure that the vehicle is being driven in a safe and legal manner, and the manufacturer does not accept any liability for its use.

Please do calibration when you first time using this camcorder. For your safety, please park the car at a safe place to do the calibration.

DVALT User Manual

Catalogue

- I.** Introduction-----Page 5
- II.** Notes on Installation-----Page 5
- III.** Battery warning-----Page 6
- IV.** Caution-----Page 6
- V.** Product Overview----Page 7
- VI.** Package Contents -----Page 8
- VII.** Installation-----Page 8
- VIII.** Buttons Function-----Page 10
- IX.** Power ON/OFF-----Page 10
- X.** Using the Camcorder-----Page 11
- XI.** LDWS Calibration-----Page 14
Long Press Menu/Mode button  to Settings-----Page 17
- XII.** Main specifications and parameters-----Page 19

I. Introduction

Thank you for purchasing this advanced camcorder. This camcorder is specifically designed for real time video and audio recording when driving.

II. Notes on Installation

1. Do NOT setup the camcorder while driving or while the vehicle is in motion. Please stop at a safe place before adjusting or installing.
2. This camcorder should be installed in a proper manner, without interfering with the driver's eyesight or Driver's eyesight, airbags or any other safety restraint system. Install the camcorder above the rear-view mirror to obtain the best open-field view. Do NOT install the camcorder in a location that will obstruct your required driving view.
3. Make sure that the lens is within the wiping range of the windscreen wiper to ensure a clear view even when it rains.
4. Do not touch the lens with your fingers. Finger grease may be left on the lens and will result in unclear videos or snapshots. Clean the lens on a regular basis.
5. Keep the product away from strong magnetic fields, which may cause damage to this product.
6. During formatting and use, do not disconnect the power supply, or insert/remove the TF card, otherwise it is likely to damage the TF card or cause program error.
7. TF card in this product is not intended to store any other files. Before it is used, format the TF card, and promptly back up important videos and images.
8. To prevent electric shock, do not insert or remove the power plug with wet hands.

9. Do not use this product in places with high humidity or temperature above 70 °C or below -20 °C.
10. Only use the dedicated charger and related accessories compatible with this product.
11. Use TF memory card of Class10 and 8G, or above.

III. Battery warning

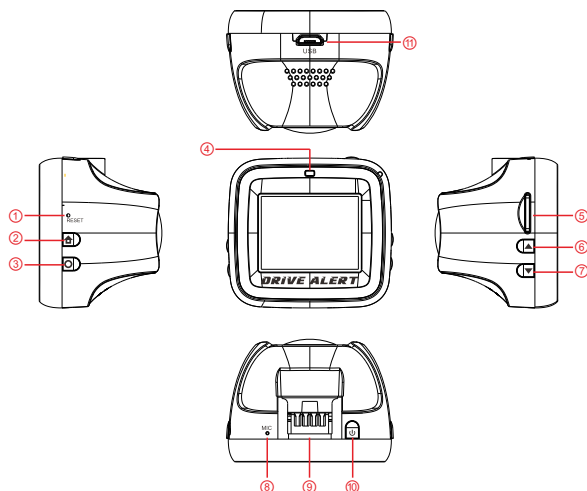
- Never dismantle, crush, or pierce the battery, or allow the battery to short-circuit. Do not expose battery being placed in high temperature environment, if battery leaks or bulges, stop continue to use.
- Always charge using the system. Risk of explosion if battery is replaced by an incorrect type.
- Keep the battery out of reach of children.
- Batteries may explode if exposed to naked fire. Never dispose of batteries in a fire.
- Never replace the battery on your own; have the dealer do it for you.
- Disposed of used batteries observing local regulations.

IV. Caution

- Never disassemble or attempt repair of this product. Doing so may damage the camcorder, cause electric shock and void your product warranty.
- Set up time and date accurately before you use this camcorder.
- Exposing the camcorder to open flames can cause explosion.
- Due to local laws and vehicles safety considerations, do not manually operate the camcorder while driving.
- The values displayed in this system, such as speed, position, and the distance warning to the speed camera set points, may be inaccurate due to the influence of surrounding environment. They are for your reference only.

■ Power acoustik Company is NOT responsible for the loss of any data/content during operation.







V. Product Overview



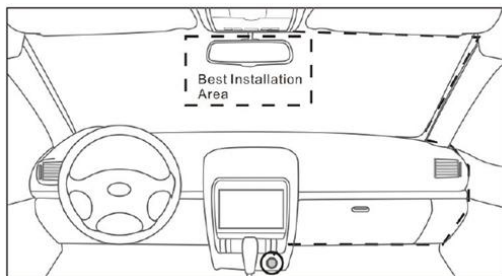
- ① RESET Button
- ② Menu/MODE Button
- ③ OK Button
- ④ Indicator Light
- ⑤ TF Card Slot
- ⑥ UP Button
- ⑦ DOWN Button
- ⑧ MIC
- ⑨ Bracket Slot
- ⑩ POWER Button
- ⑪ USB connector

VI. Package Contents

The package contains the following items. If there are any missing or damaged items, contact your dealer immediately.

Car Camcorder	Bracket	Car Charger
		
USB Cable	Warranty Card	User Manual
		

VII. Installation



DRIVE ALERT



(Picture 1-2)



(Picture 1-3)

1. Use a lint-free cloth to wipe off dust on the location of the windshield where you want to install the product.
2. Please remove the protective film of bracket suction cup, and attach the camcorder to windshield as picture 1-2.
3. Fix the bracket well and ensure the camcorder doesn't remove, as picture 1-3.
4. It is recommended to run the wire along the top of the headliner, down the passenger A-Pillar* and toward the power input. DO NOT POWER ON yet.
5. Plug the other end of the car charger to the cigarette lighter socket of your vehicle. Once the vehicle engine is started, the camcorder automatically powers on.
6. Ensure all the adjustments on the bracket are right and secure before the vehicle is moved.

Note: If the vehicle is equipped with an airbag(s) on the A-Pillar, carefully place the wire where it will NOT prohibit the airbags from inflating.

If you are uncertain or uncomfortable with continuing the install, seek a professional installer.

VIII. Buttons Function

Mode	POWER Button		UP Button		DOWN Button		OK Button		MENU/MODE Button	
	Long press	Short press	Long press	Short press	Long press	Short press	Long press	Short press	Long press	Short press
Video recording mode	Power-off	Emergency Recording					ON/OFF recording	Play/ Pause recording	Call up the setup menu	Enter the selection mode
Camera Mode	Power-off	Take Photo							Call up the menu	Enter the selection mode
List mode	Power-off			Select last file,		Select next file,	Delete the text.	Play the selected file.	Call up the menu	Enter the selection mode
Play mode	Power-off		Play last file.	Slow play	Play next file.	Switch to fast play speed.		Play/Pause		Back to List
Menu mode	Power-off			Switch to last menu.		Switch to next menu,		Confirm	Back to Previous mode/ exit mode.	
Mode selection	Power-off			Switch to last mode icon,		Switch to next mode icon,		Confirm		Exit to the selection mode.

IX. Power ON/OFF

1. Automatic power-on/off

A) The unit will automatically turn on and record after detecting the external power supply (car start).

B) When the external power supply is stopped, the data will be automatically saved and the DVR will be power-off automatically.

2. Manually power-on/off

Press the POWER button shortly to enter the power on, press and hold for seconds will be power off.

Note:

① First insert the TF card and then boot, if the boot and then insert the card is incorrect;

② Please confirm the DVR has power supply by car charger, and the DVR are used in conventional vehicle environment.

3. Indicator light

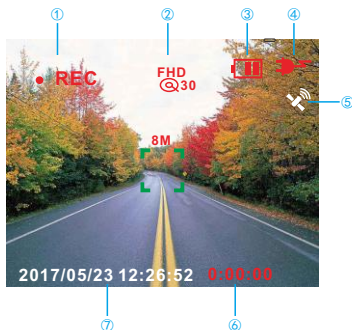
A) Power on: the machine boot indicator light.

B) Video: The machine video indicator is flashing continuously.

X.Using the Camcorder

1. Record

Record interface as below:



① Record status

② Record resolution

③ TF card status(inserted)

④ Battery status

⑤ GPS status

⑥ Recording length

⑦ Recording time and date

⑧ The distance of front car

1. The system will record automatically when start it up eachtime.

2. Loop recording:default loop recording,default record time is3 minutes.

Note: the device will enter record interface automatically when start it up.

1) Emergency recording

a. Manual Emergency recording: In the recording mode, short press the POWER button, the current video and the previous video of the current video and the next video of the current video are locked into emergency video.

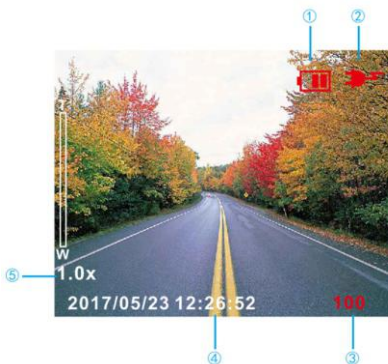
(Note: the length of the current video is the length of loop recording)

b. Automatic emergency recording: Upon vehicle impact or when G-sensor sensor value reaches the G-sensor setting value, the device will enter emergency recording, the current video and the current video of the previous video and the current video of the next video are locked as emergency video.

(Note: Note: the length of the current video is the length of loop recording)

2. Take pictures

Take pictures as below:



- ① TF card status (inserted)
- ② Battery status
- ③ The rest number of photos
- ④ Photo time and date

1) Press the MODE key to switch mode in the recording mode interface or the playback mode interface.

Press OK to enter the camera interface, press the POWER button briefly to take pictures.

2) Adjust the focal length of the camera by pressing the UP / DOWN button.

3. Playback

In video MODE interface & photographed interface press MODE key switch MODE then press OK button to enter film list/emergency/photo list interface, to view has been filmed video or photos, etc.

For example, film list interface as the following figure:



The list interface:

OK button: Play/Pause;

UP button: Last file;

DOWN button: Next file;

Video playback interface:

OK button: Play/Pause;

MENU button: Quit playing;

Photo list interface:

OK button: Play

UP button: Last file;

Down button: Next file;

MENU/MODE button: Quit playing

XI : LDWS Calibration

Long Press Menu/Mode button  to Settings.

1. Movie Clip Time

The time of loop video recording: Click the UP or DOWN button to move up or down to set the recording time: 5min ,3min or 1min for choosing.And then short press OK button to confirm.

2. Sound Record

Sound recording, click the UP/DOWN button to move up or down to set either ON or OFF.

And then short press OK button to confirm.

3. ADAS including auxiliary driving lane deviation warning and collision warning before the car,open the corresponding function,the system starts monitoring,such as:If the detected lane drifting too close to or away from the car,the voice will be sent a Di-Di-Di reminder.

1) LDWS (Lane Departure Warning System):Warning prompts assist the driver by way or reducing vehicle traffic accidents due to lane off set.When the system detects the vehicle lane deviation, will issue a "shiftlane"the voice prompts.

2)FCWS (Forward Collision Warning System): The distance between vehicles detected.

Distance 15 meters ahead of the vehicle automatically detects and issued with the vehicle in front of less than 15 meters away from the "Di-Di-Di"from voice prompt,safe driving;when the vehicle distance greater than 15 meters,the warning is automatically released.

Note:

Lane Departure Warning System minimum trigger speed of 30km/h,such as trigger not meet the minimum speed,will not start lane drifting warning.

4.Volume

Click the UP/DOWN button to move up or down to adjust volume.

DRIVE ALERT

Optional volume is from 1 to 10 and then short press OK button to confirm.

5. Delete

Click the UP/DOWN button to move up or down to delete single file or all files, and then short press OK button to confirm.

1. Protect

Click the UP/DOWN button to move up or down to protect/release files, and then short press OK button to confirm.

2. Beep

Press UP/DOWN button to select click status: open / close, shortly press OK button to finish selecting.

3. Clock Setting

Press UP/DOWN button to select time and shortly press OK button to finish time setting ,shortly press OK button to exit setting .

4. Date Format

Press Menu/Mode button to select date format:
Year/month/date, month/date/year or date/month/year;
Shortly press Ok button to finish setting.

5. Language Selection

Press UP/DOWN button to select Language: English /Spanish, shortly press OK button to finish selecting.

6. Flicker

Press UP/DOWN button to select frequency:50Hz/60Hz;Shortly press OK button to finish selecting.

7. LCD Power Save

Press UP/DOWN button to select when the screen goes to sleeping mode:1 min/3 min; Shortly press OK button to finish setting.

8. Beep

Press UP/DOWN button to select click status: open / close, shortly press OK button to finish selecting.

9. Clock Setting

Press UP/DOWN button to select time and shortly press OK button to finish time setting ,shortly press OK button to exit setting.

10. Date Format

Press Menu/Mode button to select date format:
Year/month/date, month/date/year or date/month/year;
Shortly press Ok button to finish setting.

11. Language Selection

Press UP/DOWN button to select Language: English /Spanish, shortly press OK button to finish selecting.

12. Flicker

Press UP/DOWN button to select frequency:50Hz/60Hz;Shortly press OK button to finish selecting.

13. G-sensor

Press UP/DOWN button to select protect level (G-sensor sensitivity level): OFF/ High/ Middle/Low. Shortly press OK button to finish selecting.

14. Parking Monitoring

Press UP/DOWN button to set Parking Monitoring ON & OFF. Shortly press OK button to finish selecting.

15. GPS Status: Display GPS signal status

16. Time Zone Select

Press UP/DOWN button to set time zone; Shortly press OK button to finished selecting.

17. Reset Setup

Return the unit back to factory default setting. Press UP/DOWN button to select reset status: Yes / No; Shortly press OK button to finished selecting.

18. Format SD Card.

Press UP/DOWN button set format SD card status: Yes / No, Shortly press OK button to finished selecting.

19. LDWS Calibration.

Please do calibration when you first time using this camcorder. For your safety, please park the car at a safe place to do the calibration.

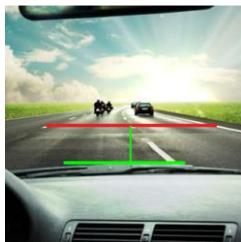
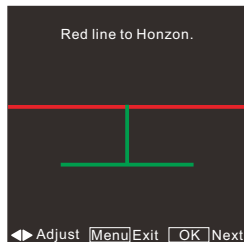
Go to Setting and click on "LDWS Calibration" into the driveway calibration interface.

There are the three steps:

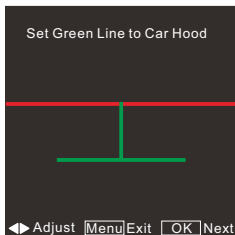
1. Set Red Line to Horizon.

Adjust the DVR position till match the horizon line, press the DVR "up" and "down" buttons, till the lines match.

Press "O" button to confirm when finish.

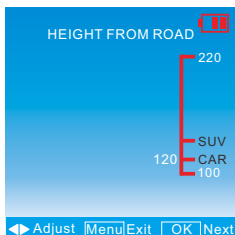


2.Set Green Line to Car Hood.



Adjust the DVR position till match the horizon line,press the DVR "up"and "down" buttons,till the lines match.
Press "O"button to confirm when finish,will go to next calibration.

3.DVR Height from road surface.



Maximal Height:220cm.
Minimum Height:100cm.

Default Setting:
Sedan Car Set at 120.
SUV Car Set at 140.

Note:The calibration is very important.It may cause the ADAS work unproperly if calibration hasn't set well.

XII. Main specifications and parameters

LCD Panel	1.5 inch TFT
Lens	143°A+HD wide Angle lens
Language selection	English/Spanish
Video resolution	1920*1080p/30fps
Video format	MOV
Photo format	JEPG
Memory card	Micro SD Max 64GB TF card
Microphone /Speaker	Support
G-Sensor	Support
Frequency	50HZ/60HZ
USB interface	USB2.0
Power input	5V 1.5A
Battery	Polymer battery 160mAh

Default Setting

1. Movie Clip Time – 3min
2. Sound Record – ON
3. LDWS – ON
4. FCWS – ON
5. Volume – 5
6. Delete – Delete One
7. Protect – Protect One
8. Beep – On
9. Clock Settings
10. Date Format – YYYY MM DD
11. Language – English
12. Flicker – 50Hz
13. LCD Power Saver – Off
14. G-sensor ---Middle
15. Parking Monitoring – Off
16. GPS Status
17. Time Zone Select – GMT-08:00
18. Reset Setup
19. Format SD-Card
20. FW Version

