



PHAD-7



OWNER'S MANUAL

Contents

- Caution 4
- How to change the disc 6
- How To Control The Monitor 7
- Features and Controls 8
- Remote Control 8
- Video setup 9
- DVD setup 10
- DVD function 10
- SD/USB function 17
- Connection Diagram 20
- Installation 21
- Dis Information 22
- Specifications 23

Specifications

Functions	Description
Screen Size	7" TFT-LCD
Aspect Ratio	16:9
Resolution	800XRGBX480
DVD Player	Fully integrated with Top Loading DVD Player
USB Slot	Video, Audio and picture Viewer
HDMI Input	Phone Interface
A/V Inputs	2.4 Inputs (One on the Front Panel)
Video Input Level	1Vp-p, 75 ohm (composite)
Wired Headphone Input	On the Front Panel
IR Frequency (A Ch)	2.3MHz/2.8MHz
IR Frequency (B Ch)	3.2MHz/3.8MHz
FM Transmitter	87.7MHz, 88.1MHz, 88.5MHz, 88.9MHz, 107.1MHz, 107.9MHz
Post Diameter	10mm Post with 12/12.5/12.7/13.8 /14/16mm (Plastic), 12mm (metal)
Posts Distance	Adjustable 110mm~190mm
3 Different Color Choices	Black Beige Gray
Power	DC 12V(9~15V)

Note : This equipment has been tested and found to comply with the limits for a Class A digital device, pursuant to part 15 of the FCC Rules. These limits are designed to provide reasonable protection against harmful interference when the equipment is operated in a commercial environment. This equipment generates, uses, and can radiate radio frequency energy and, if not installed and used in accordance with the instruction manual, may cause harmful interference to radio communications. Operation of this equipment in a residential area is likely to cause harmful interference in which case the user will be required to correct the interference at his own expense.

Disc Information

DVD features

DVD discs provide high-resolution images with high-quality sound. This DVD player can play not only DVD discs of various versions, but also S-VCD, VCD, audio CD and Mp3 discs.

Discs that cannot be played

DVD-RW, DVD-REM, CD-ROM, CD-EXTRA discs cannot be played on this unit. In addition, a CD or a CD-RW which was recorded on special software cannot be played.

Region code

Your DVD player is designed and manufactured to region management information that is recorded on a DVD disc. Please check the region code.

1: North America 2: Japan 3: Korea and Southeast Asia

4: Australia, Mid & South America 5: Russia 6: China

How to handle the disc

Don't touch the shiny side of the disc (the side with the embedded information).

Don't stick a label or a glue-based note on either side of the disc.

Don't use discs that have glue or a damaged label with exposed adhesive residue.

It might result in damage to your DVD player.

Don't put discs in the sunshine.

Park your car in the shade.



How to handle the discs

Only use round discs. Discs with other shapes like a star, a heart, etc. may cause damage to the player. If a disc is dirty, wipe softly with a wet cloth and then with a dry one. Before playback, wipe the disc outward from the center with a clean cloth. Do not use any type of solvent such as thinner, benzene, commercially available cleaners or antistatic spray. To avoid damaging your DVD player, don't use a scratched disc.



Caution

Please read and observe all warnings and instructions in this manual and those marked on the unit. Retain this booklet for future reference.

There are two kinds of alarm symbols as follows:



WARNING

The lightning bolt with arrowhead inside in an equilateral triangle is intended to alert the user to the presence of " dangerous voltage " within the product's enclosure that may be of sufficient magnitude to constitute a risk of electric shock to people.



CAUTION

The exclamation point inside an equilateral triangle is intended to alert the user to the presence of important operating and maintenance (servicing) instructions in the literature accompanying the product.

WARNING



Installation of all TV monitors must be out of the driver's field of vision.



Do not mount the product where it will obstruct the deployment of the airbag or in an area where it would affect the driver's ability to control the vehicle. Also be careful to avoid mounting the product where it can become hazardous during sudden stops or in the event of an accident.



Do not try and service these products yourself, locate a qualified service center or factory service center for all repairs.



Use extra caution with any liquids in your car. If you or your child spills any liquid on these products, pull your vehicle to the roadside and turn the key off to disconnect or wipe the products with a towel. Do not operate the equipment until all liquids have either evaporated or you have had the monitor inspected at a service center by a qualified technician. Severe harm or danger can result.



Be careful not to drop or apply under pressure to the front panel of your video monitor. If the screen cracks due to misuse, your warranty will be void!



Use only a damp cloth to clean the screen and use only purified water on the cloth. wring out all excess water prior to wiping the screen. Do not use any cleaners or chemicals to clean the screen. In most cases a dry cloth will do!

Caution

⚠ CAUTION



Quality installations are best performed by qualified and certified installers.



Watching the monitor for an extended period of time without the engine running may deplete the vehicle's battery charge.



Don't touch the unit if there is a flash of lightning. You may receive an electric shock.



This product is designed for operation with a 12 Volt DC, negative ground vehicle. It is not suitable for operation under other conditions or voltages.



Do not cover or stop up heater ducts or vents. It may cause a fire or receive an electric shock.



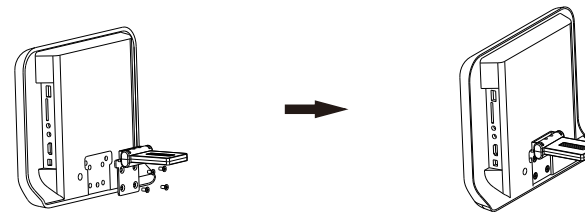
Do not bring magnetic devices such as credit card or magnetic card near the magnets.

👉 Operating Notes

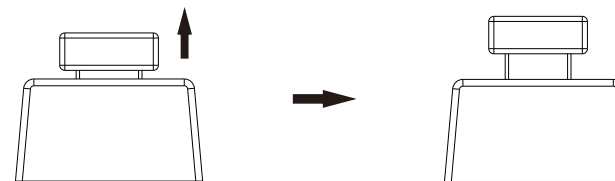
1. The operating temperature of this product is limited to 14°~+140°F.
2. If your vehicle is extremely hot or cold you must allow time for your air conditioner or heater to cool or heat the vehicle until operating temperatures have returned to normal operating ranges.
3. Optimal picture quality is achieved when viewed from directly front of the monitor (+/-30degrees).
4. Do not open the housing and attempt to make any repairs yourself. Refer servicing to qualified personnel.
5. DVD Players use an invisible laser beam which can cause hazardous radiation exposure. Be sure to operate the unit correctly as instructed.
6. Do not cut the car power supply off while a disc is playing. It can cause damage to the DVD Player.

Installation

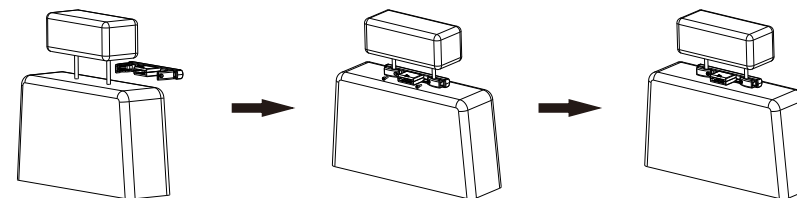
1. The machine combine with the bracket, and use 4 screws to fix.



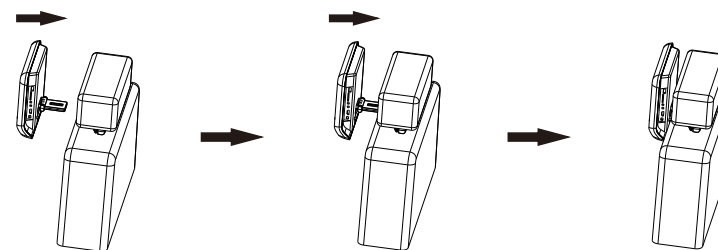
2. Raising the headrest.



3. After rising the headrest, use the "headrest mounting bracket" to fix the iron poles of the headrest. Distance between The holes of the headrest mounting bracket can adjust from 105mm-210mm, and then use 2 screws to fix.



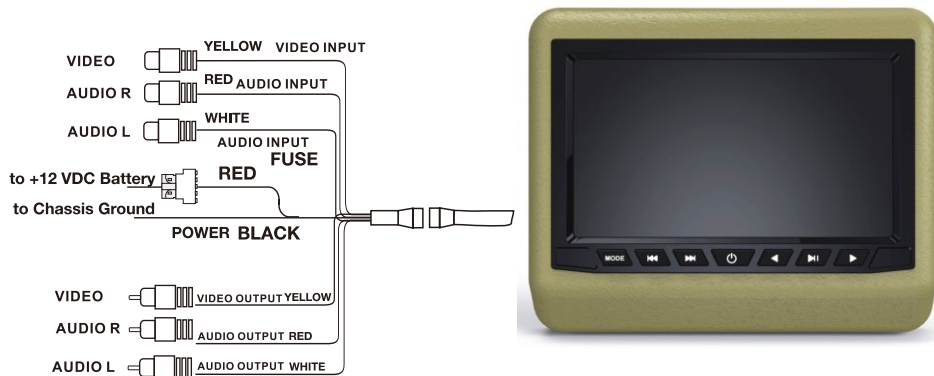
4. the bracket of the machine insert into "headrest mounting bracket" to fix, and the distance of the front and back can adjust, and last use the lock of the bracket to lock.



Connection Diagram

Connect the wires as indicated:

- Red: Connect to a switched(+) 12 volt source (ACC). Use a lead that has(+) 12V when the ignition on or in the ACC position so the monitors turns off when the key is in the off position. Wiring the monitors “hot” could cause your battery to run down when the engine is not running.
- Black: Connect to a good chassis ground.
- Reversing the polarity of the red and black leads will damage the monitor.
- Connect the video input connector to the video output from the source unit (i.e. DVD player)
- Test the syetem.



How To Control The Monitor



- 1 REMOTE IR SENSOR
- 2 MODE
DVD-AV1-AV2
- 3 PREVIOUS
- 4 NEXT
- 5 Power
Monitor on or off.
- 6 VOL-

7 PLAY/PAUSE

1. To play a disc ,short press this button if you wish to pause the playback, short press again to resume playback when the unit is paused.
2. Long Press this button to display the Setup menu. The Setup menu enables you to enter the settings required for the unit to work properly. In the setup menu, you use and and select menu. use the to adjust the size of the value of the select menu, and short press enter. Long press confirmation press setup exit.

8 VOL+

9 IR

How to change the disc



- ⑩ DC 12V JACK
- ⑪ Earphone JACK
- ⑫ Video2 input
- ⑬ USB
- ⑭ SD

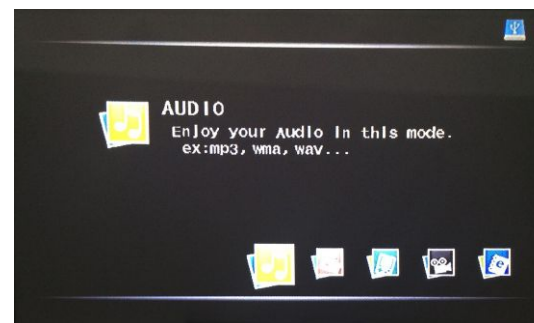
Set the panel, you can replace the current playing disc



SD/USB Functions

Select the file type :

In the current interface, press the stop button twice to enter the main interface.
As shown below:



Press the left and right arrow keys to select the desired type.
Press the ENTER key to enter the file or folder directory.
As shown below:



DVD FUNCTIONS

Zoom

[VIDEO]/[PICTUIE]

Some DVDs are programmed to allow you to zoom into the image, magnifying it. Pressing the ZOOM button does this in steps, according to the chart to the right.

[VCD]/[AUDIO]/[MP3]

This button does not function in this mode.

OSD	CONDITION
ZOOM X 2	ZOOM X 2
ZOOM X 3	ZOOM X 3
ZOOM X 4	ZOOM X 4
ZOOM X 1/2	ZOOM X 1/2
ZOOM X 1/3	ZOOM X 1/3
ZOOM X 1/4	ZOOM X 1/4
ZOOM Off	ZOOM Off

GO TO

[VIDEO]/

The GO TO function allows you to begin playback at a specific location on the disc. To do this, press GO TO and navigate the screen which follows to select this playback location.

TT

Move to the desired title.

CH

Move to the desired chapter.



Watch play time.

[AUDIO]/[PICTURE]

Pressing GO TO button display as follows

TYPE

Display format type of video

TRK

Display current and total track number



Display repeat mode

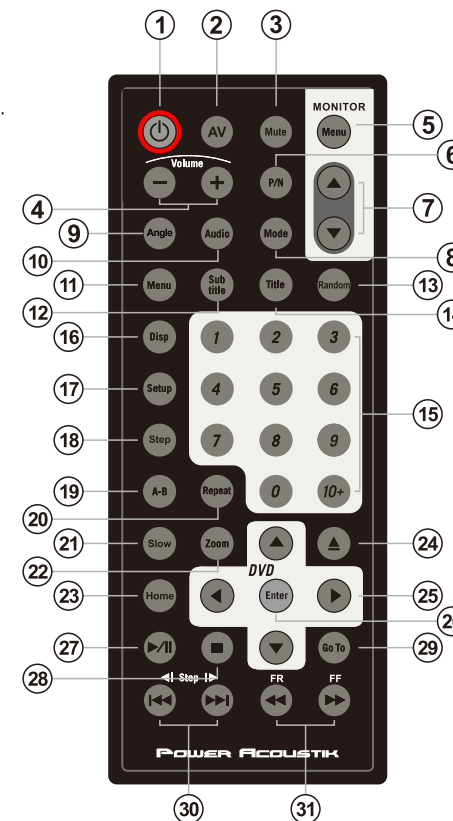


Watch play time.

Features and Controls

Remote Control

- ① **POWER**
Turns the DVD Player/Monitor on or off.
- ② **AV**
Use this button to AV Mode.
- ③ **MUTE**
Press this button to switch off the audio during playback. Press again to restore the audio.
- ④ **VOL-/+ button**
Use to increase or decrease volume level.
- ⑤ **MENU(OSD on monitor)**
Press this button to open the on-screen menu system to setup and control various of the monitor and DVD player.
- ⑥ **P/N**
This button permits you to choose among Multi, PAL and NTSC.
- ⑦ **UP/DOWN**
Use to move to the desired menu.
- ⑧ **MODE**
Use this button to switch between two modes
DVD→SD→USB
- ⑨ **ANGLE**
Press to switch the viewing angles.
(Note: This function only work with those discs encoded with multiple camera angles.)
- ⑩ **AUDIO**
Use this button to select one of the audio soundtracks programmed on a DVD disc. It is also used to select the audio output mode for the DVD playback.
(Available only if the disc supports available audiotype.)
- ⑪ **MENU (DVD menu)**
This button permits you to view the menu on the DVD.
- ⑫ **SUBTITLE**
Use this button to select the menu for choosing a subtitle language.
- ⑬ **PROG**
Select the programming mode of play.
- ⑭ **TITLE (Title menu)**
When a DVD is playing, press this button to view the Title Menu.
- ⑮ **NUMERIC button**
Use when making a selection on the menu screen.



Features and Controls

- 16 DISPLAY**
Press to show elapsed or remaining time of a chapter or a title.
- 17 SETUP**
Press this button to display the Setup menu. The Setup menu enables you to enter the settings required for the unit to work properly.
- 18 STEP**
Press the button to execute the first stop, press the button in the second and subsequent step function.
- 19 A-B (repeat from A to B)**
Use this button to select the beginning and end of a track which you wish to have repeat in playback.
- 20 REPEAT**
Press this button to change the playback mode to repeat.
- 21 SLOW**
Select slow play.
- 22 ZOOM**
If your DVD disc supports zooming in to see the program differently, pressing this button will enable you to change the amount of zoom.
- 23 HOME**
Press this button to return to the root menu.
- 24 EJECT**
Into/eject the disc.
- 25 UP/DOWN/RIGHT/LEFT ARROWS**
Use these buttons to navigate the various menus and screens for the monitor and DVD systems.
- 26 ENTER**
Press this button to confirm the item you have found and highlighted using the arrow buttons. Usually this is done to confirm a selection or item to be played on the DVD.
- 27 PLAY/PAUSE**
To start playback of a disc, press this button. Press again to pause the playback. If playback is paused, press this button to resume playback.
- 28 STOP**
Press this button to stop the playback of the current disc.
- 29 GO TO**
Use to search for a title or a chapter on your DVD disc.
- 30 SKIP FORWARD/BACK**
Use these buttons to skip to the next or last track, chapter or file on the disc in the player.
- 31 FAST FORWARD/REVERSE PLAY**
Use these buttons to select either fast forward or fast reverse playback.

DVD FUNCTION

Repeat

[DVD]

Pressing REPEAT button changes the play mode as follows:

OSD	CONDITION
REP:[Chapter]	Repeat chapter
REP:[TTLE]	Repeat title
REP:[ALL]	All
REP:[OFF]	Repeat off

[AUDIO]/[PICTUIE]

Pressing REPEAT button changes the play mode as follows:

OSD	CONDITION
REP:[REP 1]	Repeat single
REP:[REP DIR]	Repeat catalog
REP:[REP ALL]	Repeat all
REP:[OFF]	Repeat off

NTSC/PAL

This button is used to select the video standard for the DVD mode between NTSC and PAL formats.

Angle

Some DVD's are recorded with additional footage which allows you to view a scene from a different camera angle. If the ANGLE feature is enabled in the Setup Menu and the disc has this option, an "angle mark" will be displayed on the screen. When that occurs, press the ANGLE button to see these alternate viewing angles.

DVD FUNCTION

Prev(⏮)

[VIDEO]/[AUDIO]/[PICTUIE]

Press this button to advance the player from the current chapter to the previous chapter.

Next(⏭)

[VIDEO]/[AUDIO]/[PICTUIE]

Press this button to advance the player from the current chapter to the next chapter.

(A-B)

[AUDIO]/[AUDIO]

This button is used to repeat the selected segment.

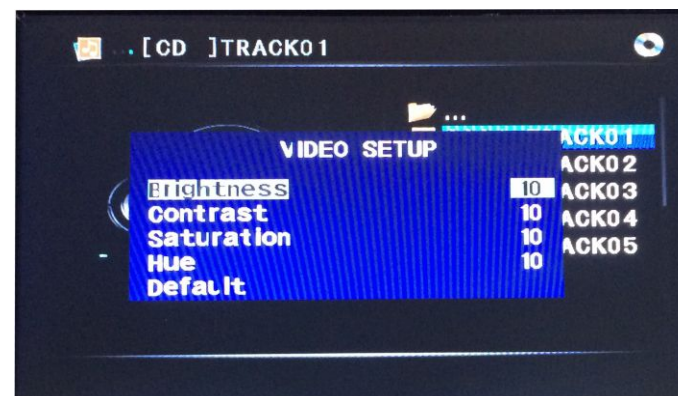
OSD	CONDITION
REPEAT A-	Start point of repeat
REPEAT A-B	Ending point repeat function
A-B CANCEL	Turn off the repeat A-B function

VIDEO Setup

Brightness/Contrast/Saturation/Hue/Default

To adjust BRIGHTNESS, CONTRAST, Saturation, Hue, default press the MENU button until you arrive at the screen for that item. Use the arrow buttons to adjust the value. Press the MENU button to make another adjustment or leave the MENU system.

1. Bring up the on-screen function menu by pressing the MENU button on the unit or the remote control.
2. Press the MENU button on the unit or the remote control of monitor until you see the item you wish to adjust.
3. Use the arrow buttons to adjust the value.
4. Press the MENU button to make another adjustment or leave the MENU system.



5. If user selects "Default" to reset SETUP menu, all the values of setup menu will be initialized by factory setting value

DVD Setup

■ Setup Menu

⊘ An invalid button press.

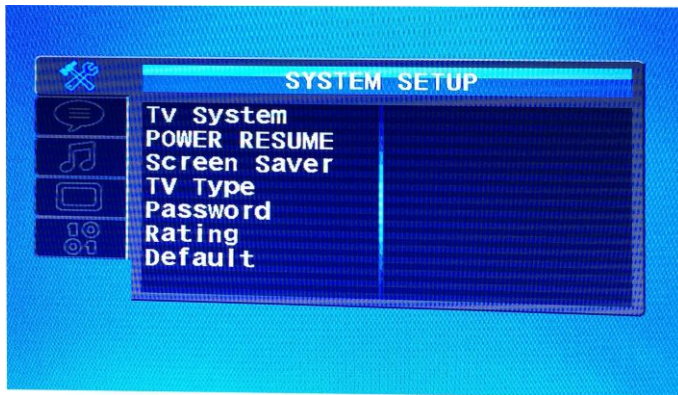
Where an invalid symbol appears, it indicates that an invalid button has been pressed. There are some differences between real functions and functions in manual.

You can easily modify setup information on the setup menu.

When the **SETUP** button is pressed, the monitor screen shows the setup menu as shown below. Select a menu category to modify according to individual preference.

1. Press the **STOP** button, if the disc plays.

2. To bring up the **SETUP** menu, press the **SETUP** button.



3. Use the **↔** button to find desired items.

4. To turn off the **SETUP** menu, press the **SETUP** button again.

DVD FUNCTION

Fast Reverse Searching(⏮)

[VIDEO]/[AUDIO]

Pressing FR button repeatedly changes the play mode as follow:

OSD	CONDITION
⏮ X2	2X rewind search
⏮ X4	4X rewind search
⏮ X8	8X rewind search
⏮ X16	16X rewind search
PLAY	Play

Fast Forward Searching(⏭)

[VIDEO]/[AUDIO]

Pressing FF button repeatedly changes the play mode as follow:

OSD	CONDITION
⏭ X2	2X forward search
⏭ X4	4X forward search
⏭ X8	8X forward search
⏭ X16	16X forward search
PLAY	Play

DVD FUNCTION

Number Buttons

[VIDEO]/[AUDIO]/[PICTUIE]

The 0 through 9 number buttons are used to enter the number of the track, chapter, the time, the date, etc. The 10+ button is used to increase the number by ten.

Subtitle(SUB-T)

[VIDEO]

This button is used to select the language for the on-screen display system. (This title menu may vary, depending on the particular DVD.)

Title

[VIDEO]

Used to display the title menu of the loaded DVD disc. This function is only present on discs which support it.

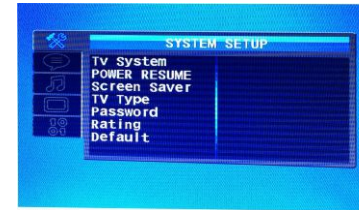
Slow(⏮)

[VIDEO]

Use this button to play a disc in slow-forward

OSD	CONDITION
SF 1/2	2X slow forward
SF 1/3	3X slow forward
SF 1/4	4X slow forward
SF 1/5	5X slow forward
SF 1/6	6X slow forward
SF 1/7	7X slow forward
SF 1/8	8X slow forward
SF Play	Play

DVD FUNCTION



System Setup

In this menu, you can set various parameters of this system.



Language Setup

In this menu, you can set various system language.



Audio Setup

In this menu, you can ON/OFF FM/IR



Vedio Setup

Under this menu, you can adjust the parameters of the display screen.



Digital Setup

In this menu, you can set a variety of sound system.

DVD FUNCTION

Eject

Not function in this unit .

Vol+/Vol-

Use these buttons to adjust the audio output level of the speaker from 0 to 15.

Mute

Press MUTE to turn off the audio part of the currently playing program. Press it again to return the audio volume to the level at which you were last listening.

Play or Pause(▶||)

Whenever this button is pressed, the mode switches from pause to play or play to pause.

Stop(■)

[VIDEO]/[AUDIO]/[PICTUIE]

In DVD mode, Press STOP to stop playback. To resume playback, press PLAY/PAUSE. If you press STOP twice and then PLAY/PAUSE, the player will begin playback at the first scene of the movie.

Arrows(◀/▶/▲/▼)

[VIDEO]/[AUDIO]/[PICTUIE]

In addition to navigating the various menus, you can use the arrow buttons to define the area of the screen you want to enlarge in ZOOM mode.

DVD FUNCTION

Setup

Pressing the SETUP button opens the Setup Menu, where you can make and adjust DVD settings to suit your equipment and preferences.

Menu

[DVD]

Pressing the SETUP brings up the DVD disc menu. The content of this menu varies, depending on the programming of the disc.

Display

[DVD]

Press this button once to display the first OSD frame and twice to display the second OSD frame

OSD	CONDITION
Video Type	Display format type of video
TT [DVD only]	Display current and total title number
CH [DVD only]	Display current and total chapter number
⌚	Display play time
Video Type	Display type of audio track
Track [DVD only]	Display current and total track number
Subtitle	Display subtitle state
Angle [DVD only]	Display angle information

[AUDIO] [PICTURE]

OSD	CONDITION
Type	Display format type
TRK	Display current and total track number
Repeat	Repeat play mode
⌚	Display play time